

GENERAL NOTES

THIS DRAWING TO BE READ IN CONJUNCTION WITH ARCHITECT'S DRAWINGS, CONSULTANT ENGINEER'S DRAWINGS AND SPECIFICATIONS & LANDSCAPE ARCHITECT'S DRAWINGS
REFER TO ARCHITECT'S SITE PLAN PL002 and PL003 FOR NORTH ORIENTATION.

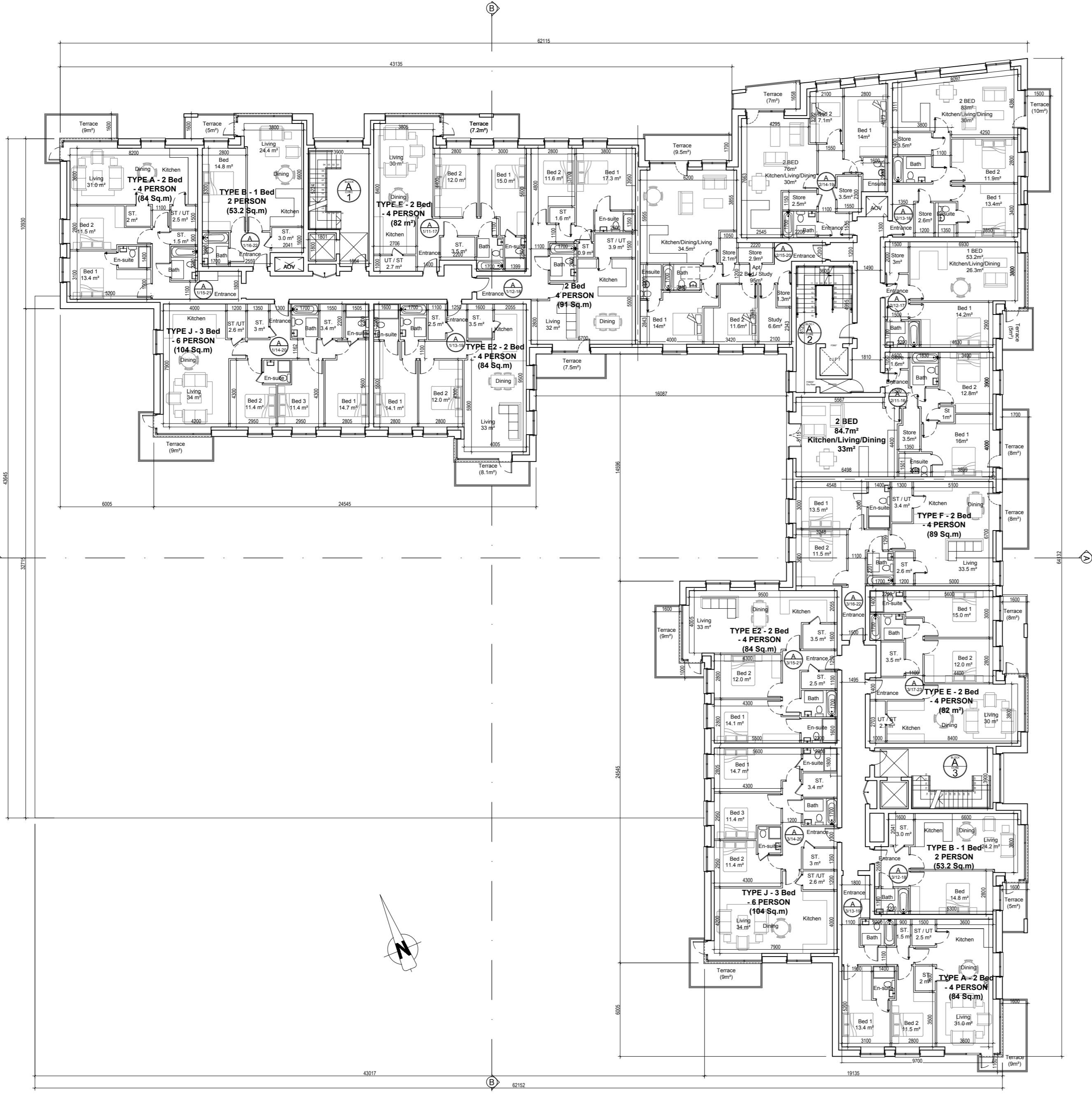
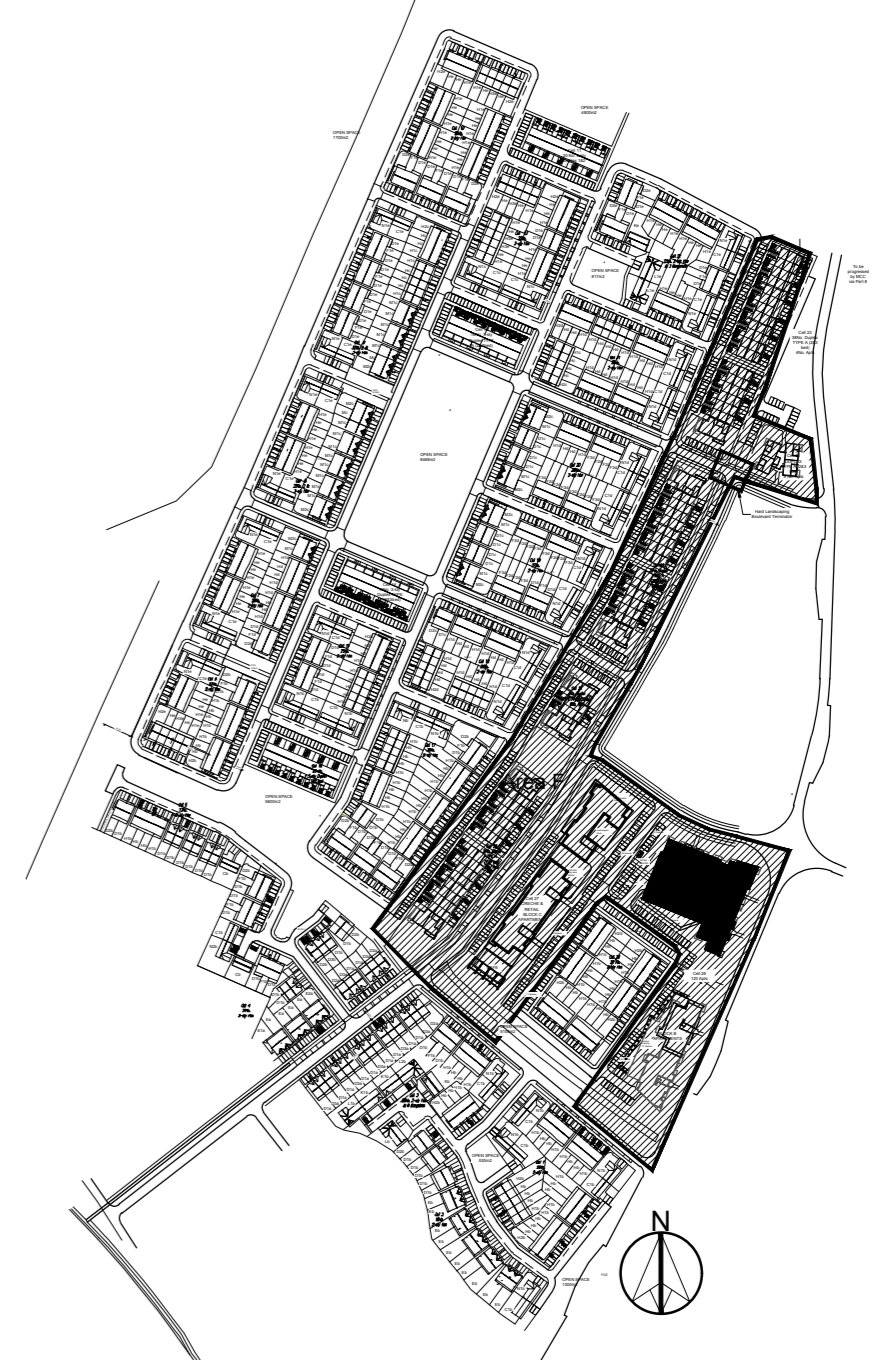
LEVELS GIVEN ON HOUSE TYPE DRAWINGS ARE GIVEN TO A LOCAL ABSOLUTE ZERO LEVEL. FOR SPECIFIC LEVELS DEPENDING ON INDIVIDUAL UNIT LOCATION, REFER TO ARCHITECT'S CONTEXT SECTIONS AND ENGINEER'S DRAWINGS WHERE LEVELS ARE ALL GIVEN IN RELATION TO LAND SURVEYOR'S BENCHMARK BASED ON MALIN HEAD DATUM LEVEL.

REFER TO SITE LAYOUT PLAN FOR NORTH ORIENTATION
REFER TO CONSULTING ENGINEERS DRAWINGS FOR BLOCK LEVELS

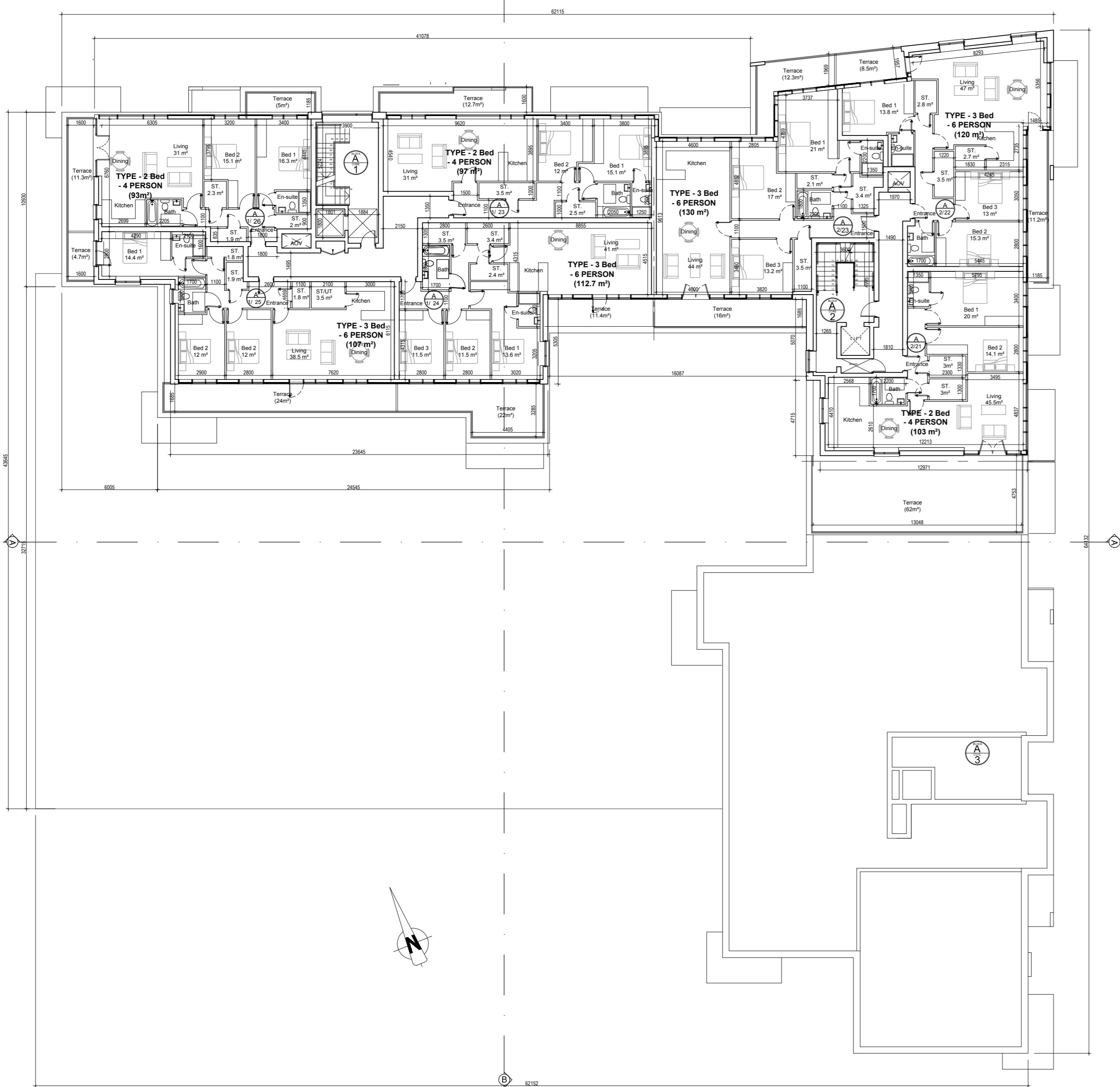
NOTES ON FINISHES:

- FLAT ROOF:** SINGLE PLY MEMBRANE & PRESSED METAL CAPPINGS & FLASHINGS.
- WALLS:** SELECTED CLAY BRICKWORK WHERE INDICATED OTHERWISE PAINTED SAND / CEMENT RENDER OR SELF COLOURED RENDER OR DRY-DASH TO CONCEALED SIDE GABLES. NATURAL STONE CLADDING AS INDICATED.
- JOINERY:** ALL WINDOWS AND DOORS, FRAMES AND LEAVES, TO BE ALUMINIUM POWDER-COATED TO APPROVED COLOUR OR UPVC OR PAINTED TIMBER TO APPROVED COLOUR. OBSCURE GLAZING WHERE INDICATED TO SENSITIVE WINDOWS. CURTAIN WALLING TO PENTHOUSE & FEATURE CORNERS
- RAINWATER GOODS:** GUTTERS, DOWNPIPES, AND FIXINGS TO BE UPVC OR ALUMINIUM POWDER COATED TO SELECTED COLOUR TO MATCH ROOF SLATES
- * SOLAR PANELS:** INDICATIVE SOLAR PANEL POSITION. FINAL SOLAR PANEL POSITION DEPENDS ON HOUSE ORIENTATION. THE SOLAR PANELS SHOWN ARE A PROVISIONAL OPTION TO SATISFY RENEWABLE ENERGY REQUIREMENTS OF BUILDING REGS PART L. SOLAR PANELS MAY BE OMITTED IN FAVOUR OF ALTERNATIVE RENEWABLE ENERGY SOURCE.

KEY PLAN (N.T.S.)



SECOND - THIRD FLOOR PLANS



FOURTH FLOOR PLAN

NOTES:

DO NOT SCALE FROM DRAWINGS. WORK TO FIGURED DIMENSIONS ONLY. ARCHITECT TO BE NOTIFIED OF ALL DISCREPANCIES.

REVISIONS		
DATE	DESCRIPTION	No.



PROJECT TITLE: Dunshaughlin East SHD	DATE: DEC'18	DRAWN BY: DE
DRAWING TITLE: Proposed Apartment Block C29-'A' Second - Fourth Floor Plans	SCALE: 1:200@A1	REVISION:
Albert Place West, Harcourt Lane, Dublin 2, Ireland Tel: 01-4788700 Fax: 01-4788711 E-Mail: arch@mcoorm.com	JOB NO: 16028.1SHD302	DRAWING NO: